

# Department of Mechanical and Aerospace Engineering

FY2023 2nd ~ 9th Semester

## Timetable

Information on lecture rooms

A### (A01), C### (A04), MM### (A05): Kawauchi Campus

M1-203: 2nd floor of Mechanical Engineering Research Building No.1 (A01), Aobayama East Campus

M2-213, M2-214, M2-215: 2nd floor of Mechanical Engineering Research Building No.2 (A03), Aobayama East Campus

Mech 1~8: 2nd floor of Mechanical Engineering Lecture Room Building (A02), Aobayama East Campus

Design Room: 2nd floor of Mechanical Engineering Research Building No.2 (A03), Aobayama East Campus

Computer Room: 3rd floor of Mechanical Engineering Research Building-M.A.E (A15), Aobayama East Campus

Laboratories for Students: 3rd floor of Mechanical Engineering Laboratories for Students-M.A.E (A07), Aobayama East Campus

Room 313, Room 314: 3rd floor of Administration Building, School of Engineering (C05), Aobayama East Campus

(Map)

Kawauchi Campus : [https://www.tohoku.ac.jp/japanese/profile/campus/01/kawauchi/kawauchi\\_map\\_.pdf](https://www.tohoku.ac.jp/japanese/profile/campus/01/kawauchi/kawauchi_map_.pdf)

Aobayama East Campus : <https://www.eng.tohoku.ac.jp/media/files/pdf/campusmap.pdf>

# Academic Calendar School of Engineering

(April 2023 ~ March 2024)

2023 Apr.	Sun	Mon	Tue	Wed	Thu	Fri	Sat
	...	...	...	...	...	...	1
	2	3	4	5	6	7	8
	9	10	11	12	13	14	15
	16	17	18	19	20	21	22
	23	24	25	26	27	28	29
	30	...	...	...	...	...	...
May	Sun	Mon	Tue	Wed	Thu	Fri	Sat
	...	1	2	3	4	5	6
	7	8	9	10	11	12	13
	14	15	16	17	18	19	20
	21	22	23	24	25	26	27
	28	29	30	31	...	...	...
	...	...	...	...	...	...	...
Jun.	Sun	Mon	Tue	Wed	Thu	Fri	Sat
	...	...	...	...	1	2	3
	4	5	6	7	8	9	10
	11	12	13	14	15	16	17
	18	19	20	21	22	23	24
	25	26	27	28	29	30	...
	...	...	...	...	...	...	...
Jul.	Sun	Mon	Tue	Wed	Thu	Fri	Sat
	...	...	...	...	...	...	1
	2	3	4	5	6	7	8
	9	10	11	12	13	14	15
	16	17	18	19	20	21	22
	23	24	25	26	27	28	29
	30	31	...	...	...	...	...
Aug.	Sun	Mon	Tue	Wed	Thu	Fri	Sat
	...	...	①	2	3	4	5
	6	⑦	8	9	10	11	12
	13	14	15	16	17	18	19
	20	21	22	23	24	25	26
	27	28	29	30	31	...	...
	...	...	...	...	...	...	...
Sep.	Sun	Mon	Tue	Wed	Thu	Fri	Sat
	...	...	...	...	...	1	2
	3	4	5	6	7	8	9
	10	11	12	13	14	15	16
	17	18	19	20	21	22	23
	24	25	26	27	28	29	30
	...	...	...	...	...	...	...
Oct.	Sun	Mon	Tue	Wed	Thu	Fri	Sat
	1	2	3	4	5	6	7
	8	◇9	10	11	12	13	14
	15	16	17	18	19	20	21
	22	23	24	25	26	27	28
	29	30	③1	...	...	...	...
	...	...	...	...	...	...	...
Nov.	Sun	Mon	Tue	Wed	Thu	Fri	Sat
	...	...	...	1	2	3	4
	5	6	7	8	9	10	11
	12	13	14	15	16	17	18
	19	20	21	22	23	24	25
	26	27	28	29	30	...	...
	...	...	...	...	...	...	...
Dec.	Sun	Mon	Tue	Wed	Thu	Fri	Sat
	...	...	...	...	...	1	2
	3	4	5	6	7	8	9
	10	11	12	13	14	15	16
	17	18	19	20	21	22	23
	24	25	26	②7	28	29	30
	31	...	...	...	...	...	...
2024 Jan.	Sun	Mon	Tue	Wed	Thu	Fri	Sat
	...	1	2	3	4	5	6
	7	8	9	10	11	12	13
	14	15	16	17	18	19	20
	21	22	23	24	25	26	27
	28	29	30	31	...	...	...
	...	...	...	...	...	...	...
Feb.	Sun	Mon	Tue	Wed	Thu	Fri	Sat
	...	...	...	...	1	2	3
	4	5	6	7	8	9	10
	11	12	13	14	15	16	17
	18	19	20	21	22	23	24
	25	26	27	28	29	...	...
	...	...	...	...	...	...	...
Mar.	Sun	Mon	Tue	Wed	Thu	Fri	Sat
	...	...	...	...	...	1	2
	3	4	5	6	7	8	9
	10	11	12	13	14	15	16
	17	18	19	20	21	22	23
	24	25	26	27	28	29	30
	31	...	...	...	...	...	...

Notice: \_\_\_\_\_ are normal classes or makeup classes, (dotted line) are intensive classes, (Thick line) are the boundary between the quarter  
 \_\_\_\_\_ are Holiday

- : Aug.1(Tue.) is supplementary classes on Thursday  
 Aug.7(Mon.) is supplementary classes on Wednesday  
 Oct.31(Tue) is supplementary classes on Friday  
 Dec.27 (Wed) is supplementary classes on Friday (General Education Subjects)

◇: Oct.9(Mon) is National Holi day but there is school as usual.

- ※ Jun.22(Thu.) is University Foundation Day but there is school as usual
- ※ Oct.27(Fri) is University Festival (plans) is no class
- ※ Jan.12 (Fri.) is the Common Test for University Admissions is no class (General Education Subjects)

Even during summer vacation and end of the term break, Intensive Lectures, Plant Visit, Graduation Thesis, Entrance exam, Commencement, etc. will be held.

In addition, sometimes re-test (supplementary test) may be carried out.

# FY2023 School of Engineering Specialized Subject Class Schedule

## Spring (1.3.5.7) Semester

April 3 (Mon.)-April 7 (Fri.), 2023	Spring Break
April 10 (Mon.)-August 7 (Mon.), 2023 (1Q: April 10 (Mon.)-June 2 (Fri.), June 7 (Wed.)- 9(Fri.), 2023) (2Q: June 5 (Mon.) - June 6 (Tue.), June 12 (Mon.) -August 7 (Mon.), 2023)	Normal classes or makeup classes
August 8 (Tue.), 2023 -	Summer Vacation

## Fall (2.4.6.8) Semester

October 2 (Mon.)-December 26 (Tue.), 2023	Normal classes or makeup classes
December 27 (Wed.), 2023-January 3 (Wed.), 2023	Winter Break
January 4 (Thu.)-February 2 (Fri.), 2022 (3Q: October 2 (Tue.)-November 24 (Fri.), November 28 (Tue.), November 30 (Thu.) - December 1 (Fri.), 2023) (4Q: November 27 (Mon.), November 29 (Wed.), December 4 (Mon.), 2023-February 2 (Fri.), 2024)	Normal classes or makeup classes
February 5 (Mon.)-	Term-end Vacation

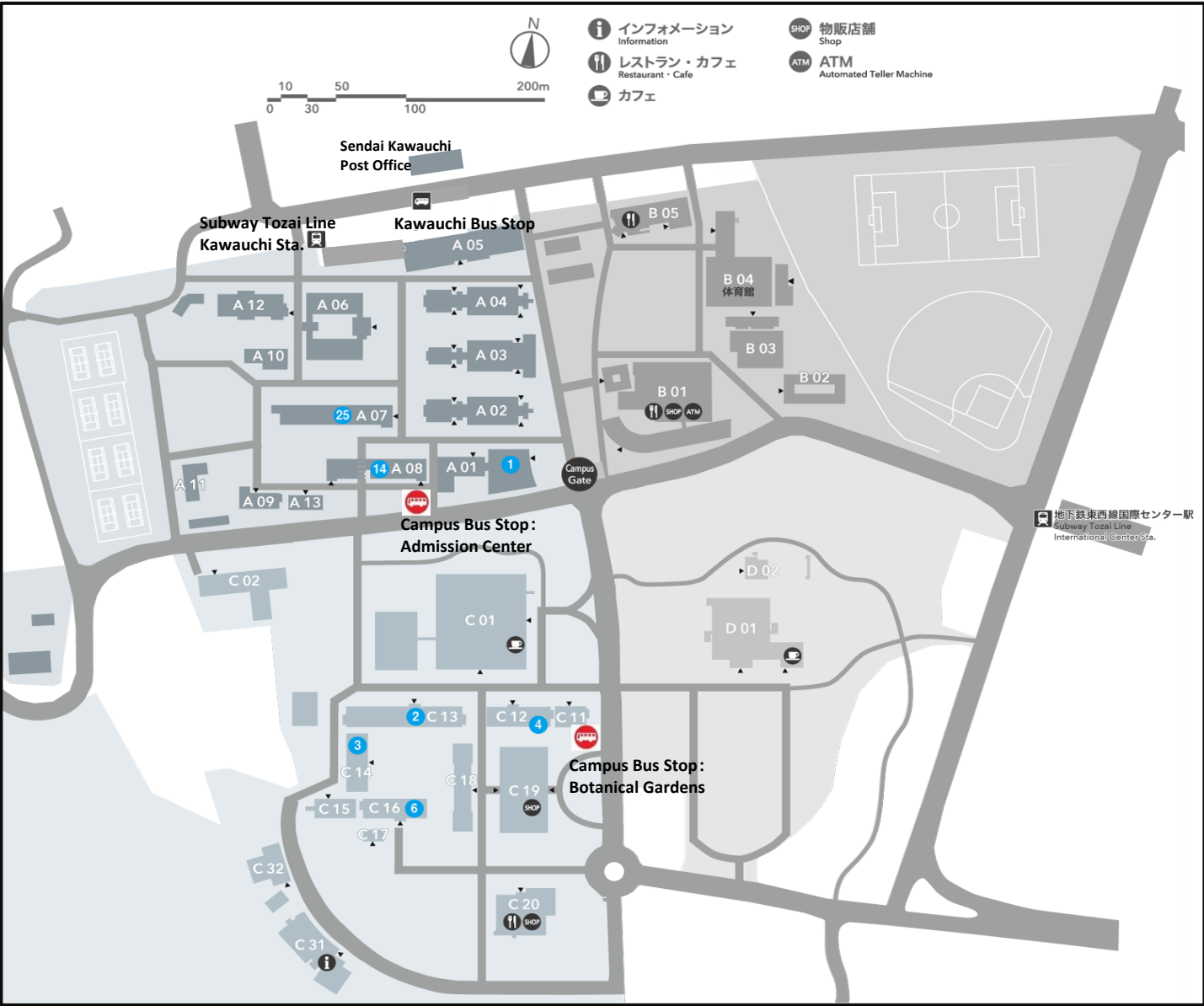
### Notice

- (1)Aug.1(Tue.) is supplementary classes on Thursday  
 Aug.7(Mon.) is supplementary classes on Wednesday  
 Oct.31(Tue) is supplementary classes on Friday  
 Dec.27 (Wed) is supplementary classes on Friday (General Education Subjects)
- (2)Oct.9(Mon) is National Holi day but there is school as usual.
- (3)Even during summer vacation and end of the term break, Intensive Lectures, Plant Visit, Graduation Thesis, Entrance exam, Commencement, etc. will be held.  
 In addition, sometimes re-test (supplementary test) may be carried out.

### Schedule for the Matriculation Ceremony etc.

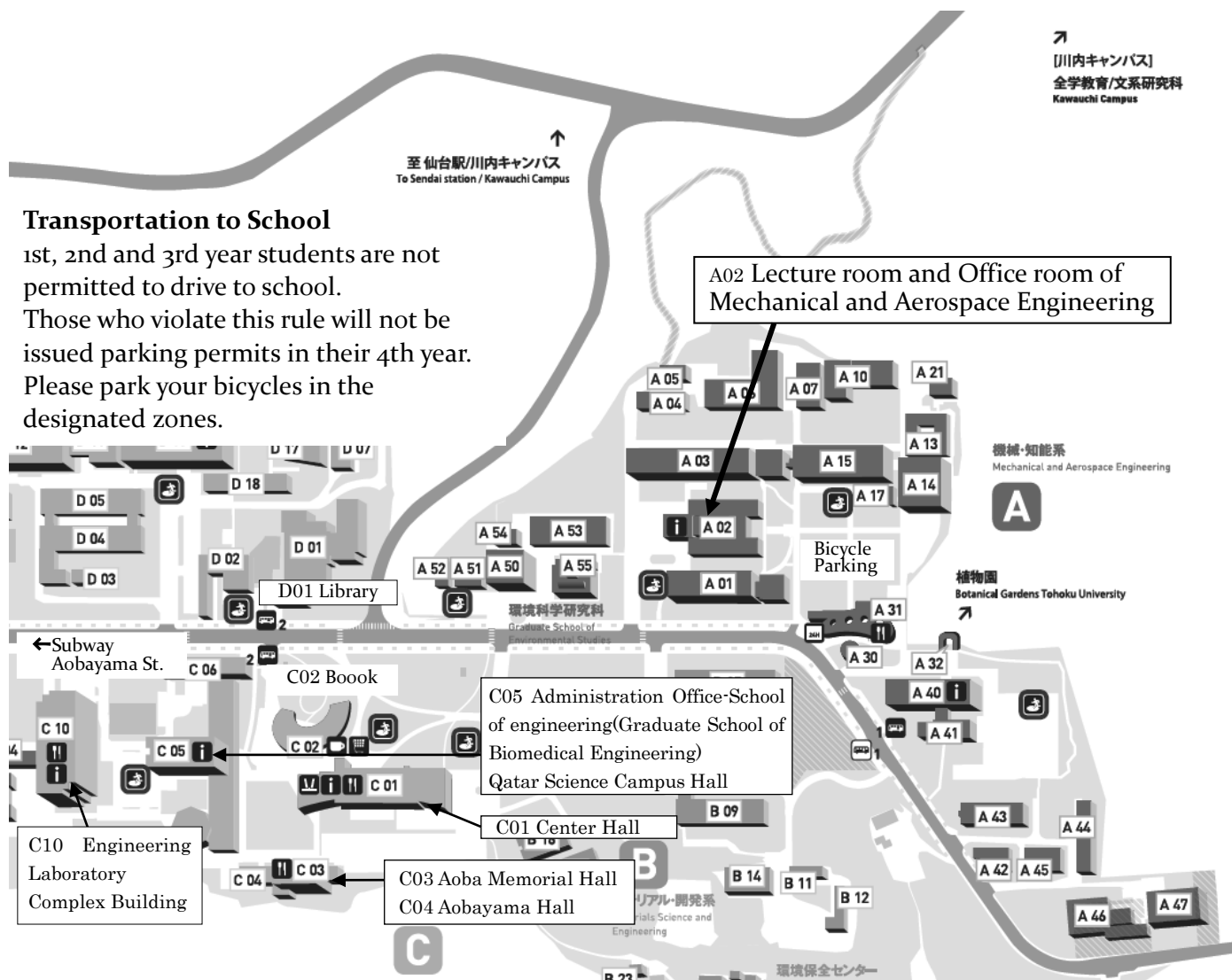
Learning level certification system (category 1:Basic Test)	April 4 (Tue.), 2023 (Kawauchi Campus)
Guidance for IMAC-U	April 5 (Wed.), 2023 10:00~
Laboratory Assignment Guidance	April 5 (Wed.), 2023 11:15~
Regular Medical Checkups (All students)*	April 20 (Thu.)- 21 (Fri.), 2023 May 8 (Mon.) ~ 19 (Fri.), 2023
University Foundation Day	Jun1 22(Thu.), 2023
Open campus	July 26 (Wed.)-27 (Thu.), 2023
September Commencement Ceremony (Doctoral, Masters, Undergraduate)	September 25 (Fri.) 2023
Emergency training	October
University Festival	October 27 (Fri.)-29 (San.), 2023
March Commencement Ceremony (Doctoral, Masters, Undergraduate)	March 26 (Tue.), 2024

● Kawauchi Campus Map



A	01	Education and Student Support Center
A	02	Lecture Rooms A
A	03	Lecture Rooms B
A	04	Lecture Rooms C
A	05	Multimedia Education and Research Complex
A	06	Student Laboratories
A	07	Center for Northeast Asian Studies, Office, Kawakita Research Forum
A	08	Graduate School of International Cultural Studies, Office
A	09	Student Health Care Center
A	10	Disability Services Office
A	12	International Exchange Building
A	13	Counseling Office
B	01	Kawauchi Welfare Facilities
B	02	Kawauchi Circle and Club Building
B	03	Kawauchi Extracurricular Activity Shared Facilities (Kawauchi Hall)
B	04	Kawauchi Gymnasium (Kawauchi Arena)
B	05	Kawauchi Sub Arena
C	01	Tohoku University Library
C	02	Admission Center
C	12	Graduate School / School of Law, Office
C	13	Graduate School / Faculty of Arts and Letters, Office
C	14	Graduate School / Faculty of Education, Office, New Humanities Building
C	16	Graduate School / Faculty of Economics and Management, Office
C	18	Lecture Rooms
C	19	Multidisciplinary Research Building, International Oasis
C	20	Welfare Facilities (Maple Park Kawauchi)
C	31	Botanical Gardens (Garden Hall)
D	01	Centennial Hall (Kawauchi Hagi Hall)

# Aobayama Campus Map

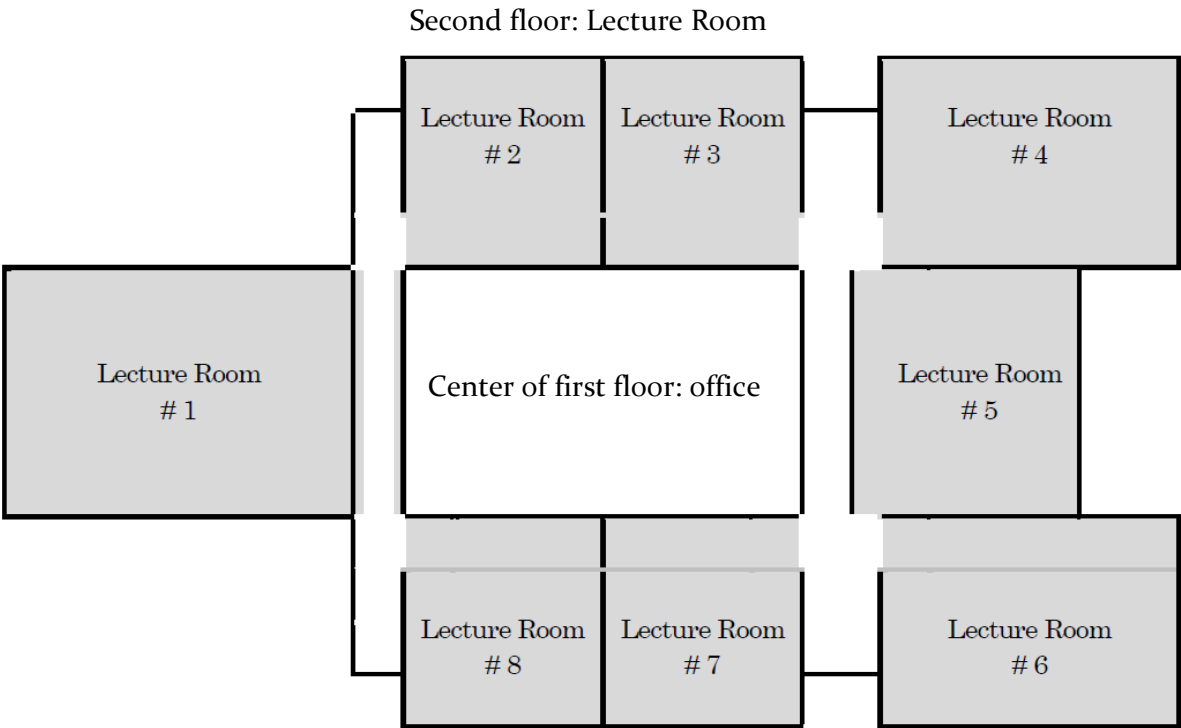


## Transportation to School

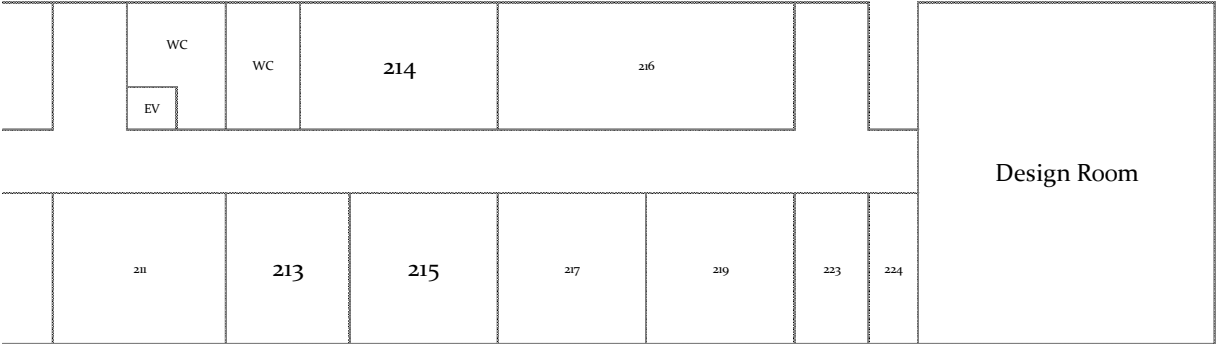
1st, 2nd and 3rd year students are not permitted to drive to school. Those who violate this rule will not be issued parking permits in their 4th year. Please park your bicycles in the designated zones.

<b>Mechanical and Aerospace Engineering</b> A 01 Research Building No.1-M.E. A 03 Research Building No.2-M.E. A 02 Lecture Room Building-M.E. A 05 Research Laboratory I-M.E. A 04 Research Laboratory J-M.E. A 06 Research Laboratory Building A 07 Laboratories for Students-M.A.E. Nano-Precision Machining Shop A 15 Research Building-M.A.E. A 10 Fracture Physics and Chemistry Research Building Fracture and Reliability Research Institute A 14 Micromachining Facility Micro/Nano-Machining Research and Education Center A 17 Nanomachining Facility A 13 Nano-Biomedical Engineering Research Building A 21 Nano-Biomedical Engineering Research Laboratory  <b>Common</b> A 30 Automobile Museum A 31 Daily Yamazaki, Komorebi Cafe A 32 Botanical Gardens Tohoku University Aobayama Gate	<b>Graduate School of Environmental Studies</b> A 50 Research Building A 51 Lecture Room Building A 52 Geoscience Research Laboratory A 53 Research Laboratory A 54 Annex A 55 Ecollab.  <b>Quantum Science and Energy Engineering</b> A 40 Research Building A 41 Lecture Room Building A 43 Radioisotope Laboratory A 42 Research building of research center for remediation engineering of living environments contaminated with radioisotopes A 44 Integrated Laboratory for Advanced Fusion Reactor Engineering A 45 Laboratory building of research center for remediation engineering of living environments contaminated with radioisotopes A 46 Fast Neutron Laboratory A 47 Subcritical Assembly
--	---

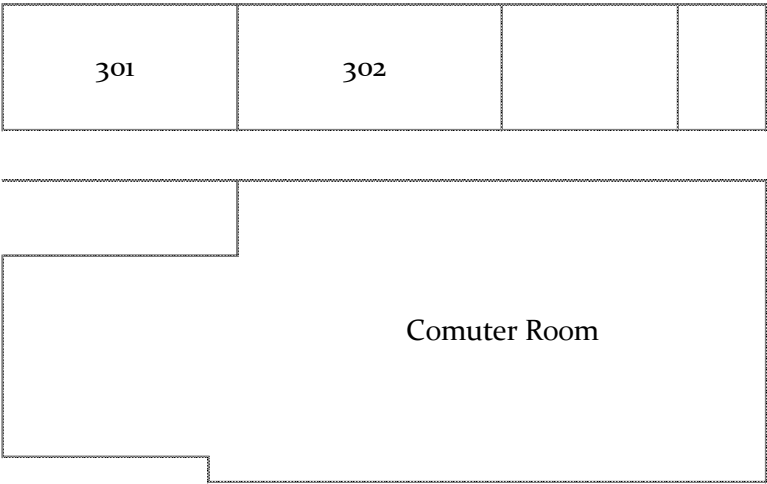
\* Lecture room Building of Mechanical and Aerospace Engineering (Refer: Campus map A02)



Research Building No 2. M.E.(Refer: Campus map A03)  
2<sup>nd</sup> floor



Research Building-M.A.E.(Refer: Campus map A15)  
3<sup>rd</sup> floor



General Eduction Class 3-4 Quarter (2 Semester)

2S	8:50 to 9:35 a.m.	9:35 to 10:20 a.m.	10:30 to 11:15 a.m.	11:15 to 12:00 p.m.	1:00 to 1:45 p.m.	1:45 to 2:30 p.m.	2:40 to 3:25 p.m.	3:25 to 4:10 p.m.	4:20 to 5:05 p.m.	5:05 to 5:50 p.m.
Mon.	㊦ CB23231 Linear Algebra A Mon.1 [C305 (Bld. A04) Kawauchi] Rintaro Ohno	㊦ CB12206 Physics A Mon.2 [C305 (Bld. A04) Kawauchi] Takeshi Koike	㊦ CB13214 Chemistry B Mon.3 [C204 (Bld. A04) Kawauchi] Mott Derrick	㊦ CB14212 Basic Japanese I Mon.4, Tue.5, Thu.2, Fri.3 [C204 (Bld. A04) Kawauchi] Natsue Sugaya, Atsuko Uchiyama, Masako Hayashi						
Tue.		㊦ CB22234 Life and Nature Tue.2 [C203 (Bld. A04) Kawauchi] Tomofumi Katayama						㊦ CB14212 Basic Japanese I Mon.4, Tue.5, Thu.2, Fri.3 [C204 (Bld. A04) Kawauchi] Natsue Sugaya, Atsuko Uchiyama, Masako Hayashi		
Wed.	㊦ CB31230 Economy and Society Wed.1 [C103 (Bld. A04) Kawauchi] Jeremy Ryan September	㊦ CB32225 Chemistry A Wed.2 [C103 (Bld. A04) Kawauchi] Mott Derrick				㊦ TB13101 Exercises in Mathematics and Physics I Wed.4 [C204 (Bld. A04) Kawauchi] Chen Ying				
Thu.	㊦ CB41216 Information and Data Literacy Thu.1 [M101 (Bld. A05) Kawauchi] DAHAN Xavier	㊦ CB14212 Basic Japanese I Mon.4, Tue.5, Thu.2, Fri.3 [C204 (Bld. A04) Kawauchi] Natsue Sugaya, Atsuko Uchiyama, Masako Hayashi	㊦ CB43229 Earth Material Science Thu.3 [C203 (Bld. A04) Kawauchi] Breedlove	㊦ CB44205 Biology A Thu.4 [C203 (Bld. A04) Kawauchi]						
Fri.	㊦ CB51211 History Fri.1 [C203 (Bld. A04) Kawauchi] Clinton Godart	㊦ CB52220 Calculus A Fri.2 [C203 (Bld. A04) Kawauchi] DAHAN Xavier	㊦ CB14212 Basic Japanese I Mon.4, Tue.5, Thu.2, Fri.3 [C204 (Bld. A04) Kawauchi] Natsue Sugaya, Atsuko Uchiyama, Masako Hayashi	㊦ CB54205 Introduction to Academic Learning Fri.4 [C204 (Bld. A04) Kawauchi] Yumiko Watanabe						

•㊦Classes of semester subject   ㊦ Classes of quarter subject   □Slots in white:Specialized Subjects   ■Slots in yellow:General Education Subjects  
Specialized Subject Classes are held on Aobayama East Campus, except "Excersized in Mathematics and Physics II" on Wednesdays.

Mechanical and Aerospace Engineering 1 Quarter (3 Semester)

3S 1Q	8:50 to 9:35 a.m.	9:35 to 10:20 a.m.	10:30 to 11:15 a.m.	11:15 to 12:00 p.m.	1:00 to 1:45 p.m.	1:45 to 2:30 p.m.	2:40 to 3:25 p.m.	3:25 to 4:10 p.m.	4:20 to 5:05 p.m.	5:05 to 5:50 p.m.
Mon.			Ⓚ TB13044  Mechanics  Mon.2, Fri.1 [M2-214 (Bld. A03) Aobayama East]  Anna Suzuki		Ⓚ TB13014  Mathematics I  Mon.3, Fri.3 [M2-214 (Bld. A03) Aobayama East]  Masayuki Takahashi		Ⓚ TB13061  Exercises in Computer-Aided Problem Solving  Mon.4, Fri.4 [Computer Room (Bld. A15) Aobayama East]  Takayuki Okatani, Shingo Kagami			
Tue.	Ⓢ CB21301  Basic Japanese II  Tue.1, Wed.2, Thu.5 [A403 (Bld. A02) Kawauchi] Natsue Sugaya, Atsuko Uchiyama, Masako Hayashi	Ⓢ CB24317  Calculus B  Tue.2 [C203 (Bld. A04) Kawauchi] DAHAN Xavier			Ⓢ TBA  Sports A  Tue.3					
Wed.	Ⓢ CB31319  Physics C  Wed.1 [R115 (Bld. A12) Kawauchi] Takeshi Koike	Ⓢ CB21301  Basic Japanese II  Tue.1, Wed.2, Thu.5 [A403 (Bld. A02) Kawauchi] Natsue Sugaya, Atsuko Uchiyama, Masako Hayashi			Ⓢ CB33315  Chemistry C  Wed.3 [R115 (Bld. A12) Kawauchi] Mott Derrick		Ⓢ TB13101  Exercises in Mathematics and Physics II  Wed.4 [C204 (Bld. A04) Kawauchi] Chen Ying			
Thu.		Ⓢ CB42312  Physics B  Thu.2 [R115 (Bld. A12) Kawauchi] Fedorynenko Dmytro		Ⓢ CB43307  Introductory Science Experiments  Thu.3-4 [Student Laboratories (Bld. A06) Kawacuhi] Norihiro Nakamura other et al.			Ⓢ CB21301  Basic Japanese II  Tue.1, Wed.2, Thu.5 [A403 (Bld. A02) Kawauchi] Natsue Sugaya, Atsuko Uchiyama, Masako Hayashi			
Fri.	Ⓚ TB13044  Mechanics  Mon.2, Fri.1 [C104 (Bld. A04) Kawauchi]  Anna Suzuki	Ⓢ CB52301  Linear Algebra B  Fri.2 [C203 (Bld. A04) Kawauchi] Alecander Gavriljuk			Ⓚ TB13014  Mathematics I  Mon.3, Fri.3 [M2-214 (Bld. A03) Aobayama East]  Masayuki Takahashi		Ⓚ TB13061  Exercises in Computer-Aided Problem Solving  Mon.4, Fri.4 [Computer Room (Bld. A15) Aobayama East]  Takayuki Okatani, Shingo Kagami			

•ⓈClasses of semester subject Ⓚ Classes of quarter subject □Slots in white:Specialized Subjects ■Slots in yellow:General Education Subjects

Specialized Subject Classes are held on Aobayama East Campus, except "Excersized in Mathematics and Physics II" on Wednesdays and "Mechanics" on Friday.

\* Sports A: Students will choose one of the sports activities on the first day of "Sports A". It's not required to wear sportswear or gym shoes on the first day. Things to bring: Writing utensils



Mechanical and Aerospace Engineering 2 Quarter (3 Semester)

3S 2Q	8:50 to 9:35 a.m.	9:35 to 10:20 a.m.	10:30 to 11:15 a.m.	11:15 to 12:00 p.m.	1:00 to 1:45 p.m.	1:45 to 2:30 p.m.	2:40 to 3:25 p.m.	3:25 to 4:10 p.m.	4:20 to 5:05 p.m.	5:05 to 5:50 p.m.
Mon.	◎ TB13022  Mathematics II  Mon.1, Fri.3 [M2-214 (Bld. A03) Aobayama East] Takashi Furusawa		◎ TB13034  Numerical Analysis  Mon.2, Fri.4 [M2-213 (Bld. A03) Aobayama East] Kanjuro Makihara							
Tue	◎ CB21301  Basic Japanese II  Tue.1, Wed.2, Thu.5 [A403 (Bld. A02) Kawauchi] Natsue Sugaya, Atsuko Uchiyama, Masako Hayashi		◎ CB24317  Calculus B  Tue.2 [C203 (Bld. A04) Kawauchi] DAHAN Xavier		◎ TBA  Sports A  Tue.3					
Wed	◎ CB31319  Physics C  Wed.1 [R115 (Bld. A04) Kawauchi] Takeshi Koike		◎ CB21301  Basic Japanese II  Tue.1, Wed.2, Thu.5 [A403 (Bld. A02) Kawauchi] Natsue Sugaya, Atsuko Uchiyama, Masako Hayashi		◎ CB33315  Chemistry C  Wed.3 [R115 (Bld. A04) Kawauchi] Mott Derrick		◎ TB13101  Exercises in Mathematics and Physics II  Wed.4 [C204 (Bld. A04) Kawauchi] Chen Ying			
Thu			◎ CB42312  Physics B  Thu.2 [R115 (Bld. A04) Kawauchi] Fedorynenko Dmytro		◎ CB43307  Introductory Science Experiments  Thu.3-4 [Student Laboratories (Bld. A06) Kawacuhi] Norihiro Nakamura other et al.			◎ CB21301  Basic Japanese II  Tue.1, Wed.2, Thu.5 [A403 (Bld. A04) Kawauchi] Natsue Sugaya, Atsuko Uchiyama, Masako Hayashi		
Fri			◎ CB52301  Linear Algebra B  Fri.2 [C203 (Bld. A04) Kawauchi] Alecander Gavrilyuk		◎ TB13022  Mathematics II  Mon.1, Fri.3 [M2-214 (Bld. A03) Aobayama East] Takashi Furusawa		◎ TB13034  Numerical Analysis  Mon.2, Fri.4 [M2-213 (Bld. A03) Aobayama East] Kanjuro Makihara			

•ⓈClasses of semester subject Ⓢ Classes of quarter subject □Slots in white:Specialized Subjects ■Slots in yellow:General Education Subjects

Specialized Subject Classes are held on Aobayama East Campus, except "Excersized in Mathematics and Physics II" on Wednesdays.

\* Sports A: Students will choose one of the sports activities on the first day of "Sports A". It's not required to wear sportswear or gym shoes on the first day. Things to bring: Writing utensils

Mechanical and Aerospace Engineering 3 Quarter (4 Semester)

4S 3Q	8:50 to 9:35 a.m.	9:35 to 10:20 a.m.	10:30 to 11:15 a.m.	11:15 to 12:00 p.m.	1:00 to 1:45 p.m.	1:45 to 2:30 p.m.	2:40 to 3:25 p.m.	3:25 to 4:10 p.m.	4:20 to 5:05 p.m.	5:05 to 5:50 p.m.
Mon.	◎ TB14015  Quantum Mechanics  Mon.1,Thu.1 [M2-214 (Bld. A03) Aobayama East] Wataru Yashiro		◎ TB14025  Mechanical Vibrations I  Mon.2, Fri.2 [M2-214 (Bld. A03) Aobayama East] Mitsuhiro Hayashibe, Fedorynenko Dmytro		◎ TB14075  Mechanics of Materials I  Mon.3, Thu.3 [M2-214 (Bld. A03) Aobayama East] Yuji Ichikawa, Yoichi Takeda					
	◎ CB21401  Probability & Statistics  Tue.2 [C204 (Bld. A04) Kawauchi] Rintaro Ohno		◎ CB22401  Intermediate Japanese  Tue.2, Wed.1-2 [C204 (Bld. A04) Kawauchi] Atsuko Uchiyama, Yukari Azumi		◎ CB23402  Ordinary Differential Equations  Tue.3 [C404 (Bld. A04) Kawauchi] DAHAN Xavier		◎ TBA Science Technology and Industry in Japan Tue.5 [A204 (Bld. A02) Kawauchi] Yumiko Watanabe		◎ CB25209  Digital Entrepreneurship Seminar  Tue.5 [C101 (Bld. A04) Kawauchi] Takeshi Koike	
Wed	◎ CB22401  Intermediate Japanese  Tue.2, Wed.1-2 [C204 (Bld. A04) Kawauchi] Atsuko Uchiyama, Yukari Azumi				◎ TB14151  Seminar I  Wed.3, Fri.3 [M2-214 (Bld. A03) Aobayama East]		◎ TB14131  Practice of Information Processing  Wed.4-5 [MM104 (Bld. A05) Kawauchi] Taku Nonomura			
Thu	◎ TB14015  Quantum Mechanics  Mon.1,Thu.1 [M2-214 (Bld. A03) Aobayama East] Wataru Yashiro		◎ TB14035  Thermodynamics I  Thu.2, Fri.1 [M2-214 (Bld. A03) Aobayama East] Takashi Tokumasu, Akihiro Hayakawa		◎ TB14075  Mechanics of Materials I  Mon.3, Thu.3 [M2-214 (Bld. A03) Aobayama East] Yuji Ichikawa, Yoichi Takeda					
Fri	◎ TB14035  Thermodynamics I  Thu.2, Fri.1 [M2-214 (Bld. A03) Aobayama East] Takashi Tokumasu, Akihiro Hayakawa		◎ TB14025  Mechanical Vibrations I  Mon.2, Fri.2 [M2-214 (Bld. A03) Aobayama East] Mitsuhiro Hayashibe, Fedorynenko Dmytro		◎ TB14151  Seminar I  Wed.3, Fri.3 [M2-214 (Bld. A03) Aobayama East]		◎ CB54401  Health  Fri.4 [C203 (Bld. A04) Kawauchi] Ryouichi Nagatomi			
Intensive courses	Team-based Engineering for Invention (創造工学研修): Instructor and student arrange and decide the schedule of this lesson.									

•◎Classes of semester subject ◎ Classes of quarter subject □Slots in white:Specialized Subjects      ■Slots in yellow:General Education Subjects

Mechanical and Aerospace Engineering 4 Quarter (4 Semester)

4S 4Q	8:50 to 9:35 a.m.	9:35 to 10:20 a.m.	10:30 to 11:15 a.m.	11:15 to 12:00 p.m.	1:00 to 1:45 p.m.	1:45 to 2:30 p.m.	2:40 to 3:25 p.m.	3:25 to 4:10 p.m.	4:20 to 5:05 p.m.	5:05 to 5:50 p.m.
Mon.	④ TB14161  Mechanics of Materials II  Mon.1, Thu.1 [M2-214 (Bld. A03) Aobayama East] Takeshi Yamaguchi, Go Yamamoto		④ TB14213  Control Engineering I  Mon.2, Fri.2 [M2-214 (Bld. A03) Aobayama East] Dai Owaki		④ TB14171  Fluid Mechanics I  Mon.3, Thu.3 [M2-214 (Bld. A03) Aobayama East] Takehiko Sato					
Tue	⑤ CB21401  Probability & Statistics  Tue.2 [C204 (Bld. A04) Kawauchi] Rintaro Ohno		⑤ CB22401  Intermediate Japanese  Tue.2, Wed.1-2 [C204 (Bld. A04) Kawauchi] Atsuko Uchiyama, Yukari Azumi		⑤ CB23402  Ordinary Differential Equations  Tue.3 [C404 (Bld. A04) Kawauchi] DAHAN Xavier		⑤ TBA  Science Technology and Industry in Japan  Tue.5 [A204 (Bld. A02) Kawauchi] Yumiko Watanabe		⑤ CB25209  Digital Entrepreneurship Seminar  Tue.5 [C101 (Bld. A04) Kawauchi] Takeshi Koike	
Wed	⑤ CB22401  Intermediate Japanese  Tue.2, Wed.1-2 [C204 (Bld. A04) Kawauchi] Atsuko Uchiyama, Yukari Azumi				⑤ TB14151  Seminar I  Wed.3, Fri.3 [M2-214 (Bld. A03) Aobayama East]		④ TB14097  Computer Seminar I  Wed.4-5 [M2-214 (Bld. A03) Aobayama East]  Students must complete "Computer Seminar I" in the early 5th semester of the following year (FY2024)			
Thu	④ TB14161  Mechanics of Materials II  Mon.1, Thu.1 [M2-214 (Bld. A03) Aobayama East] Takeshi Yamaguchi, Go Yamamoto		④ TB14076  Materials Science I  Thu.2, Fri.1 [M2-214 (Bld. A03) Aobayama East] kazuhisa Sato, Yuji Ichikawa		④ TB14171  Fluid Mechanics I  Mon.3, Thu.3 [M2-214 (Bld. A03) Aobayama East] Takehiko Sato					
Fri	④ TB14076  Materials Science I  Thu.2, Fri.1 [M2-214 (Bld. A03) Aobayama East] kazuhisa Sato, Yuji Ichikawa		④ TB14213  Control Engineering I  Mon.2, Fri.2 [M2-214 (Bld. A03) Aobayama East] Dai Owaki		⑤ TB14151  Seminar I  Wed.3, Fri.3 [M2-214 (Bld. A03) Aobayama East]		⑤ CB54401  Health  Fri.4 [C203 (Bld. A04) Kawauchi] Ryouichi Nagatomi			
Intensive courses	Team-based Engineering for Invention (創造工学研修): Instructor and student arrange and decide the schedule of this lesson.									

•⑤Classes of semester subject    ④ Classes of quarter subject    □Slots in white:Specialized Subjects    ■Slots in yellow:General Education Subjects

Mechanical and Aerospace Engineering 1 Quarter (5 Semester)

5S 1Q	8:50 to 9:35 a.m.	9:35 to 10:20 a.m.	10:30 to 11:15 a.m.	11:15 to 12:00 p.m.	1:00 to 1:45 p.m.	1:45 to 2:30 p.m.	2:40 to 3:25 p.m.	3:25 to 4:10 p.m.	4:20 to 5:05 p.m.	5:05 to 5:50 p.m.
Mon	◎ TB15303  Electrical and Electronic Circuit I  Mon.1, Thu.1 [M2-214 (Bld. A03) Aobayama East] Naoki Inomata									
	◎ TB15112  Theory of Elasticity  Mon.1, Thu.1 [M2-213 (Bld. A03) Aobayama East] Go Yamamoto									
	◎ TB15124  Manufacturing Engineering and Technology I  Mon.2, Thu.2 [M2-213 (Bld. A03) Aobayama East] Yoichi Takeda		◎ TB15204  Fundamentals of Information Science I  Mon.3, Thu.3 [M2-213 (Bld. A03) Aobayama East] Hiroaki Kobayashi							
Tue	◎ TB15291  Materials Science II  Tue.1, Fri.1 [M2-214 (Bld. A03) Aobayama East] Ken Suzuki		◎ TB15307  Mechanical Vibrations II  Tue.2, Fri.2 [M2-214 (Bld. A03) Aobayama East] Masaya Toda							
Wed.										
							◎ TB14095  Computer Seminar I  Wed.4-5 [M2-214 (Bld. A03) Aobayama East]  Only students who have compleed "Computer Seminar I" of the late 4th semester of the last year (FY2023) can take this lecture			
Thu.	◎ TB15303  Electrical and Electronic Circuit I  Mon.1, Thu.1 [M2-214 (Bld. A03) Aobayama East] Naoki Inomata									
	◎ TB15112  Theory of Elasticity  Mon.1, Thu.1 [M2-213 (Bld. A03) Aobayama East] Go Yamamoto									
	◎ TB15124  Manufacturing Engineering and Technology I  Mon.2, Thu.2 [M2-213 (Bld. A03) Aobayama East] Yoichi Takeda		◎ TB15204  Fundamentals of Information Science I  Mon.3, Thu.3 [M2-213 (Bld. A03) Aobayama East] Hiroaki Kobayashi							

Fri.	Ⓢ TB15291	Ⓢ TB15307		Ⓢ TB15401
	Materials Science II	Mechanical Vibrations II		Design and Drawing I
	Tue.1, Fri.1	Tue.2, Fri.2		Fri.4-5
	[M2-214 (Bld. A03) Aobayama East] Ken Suzuki	[M2-214 (Bld. A03) Aobayama East] Masaya Toda		[M2-214 and Design Room (Bld. A03) Aobayama East] Yusuke Tamura

•ⓈClasses of semester subject   Ⓢ Classes of quarter subject

Mechanical and Aerospace Engineering 2 Quarter (5 Semester)

5S 2Q	8:50 to 9:35 a.m.	9:35 to 10:20 a.m.	10:30 to 11:15 a.m.	11:15 to 12:00 p.m.	1:00 to 1:45 p.m.	1:45 to 2:30 p.m.	2:40 to 3:25 p.m.	3:25 to 4:10 p.m.	4:20 to 5:05 p.m.	5:05 to 5:50 p.m.
Mon	④ TB15362 Manufacturing Engineering and Technology II Mon.1, Thu.1 [M2-215 (Bld. A03) Aobayama East] Masayoshi Mizutani, Takeshi Yamaguchi		④ TB15281 Electromagnetics I Mon.2, Thu.2 [M2-214 (Bld. A03) Aobayama East] Takashiro Tsukamoto, Gael Sebald		④ TB15212 Fundamentals of Information Science II Mon.3-4 [M2-214 (Bld. A03) Aobayama East] Masayuki Sato					
	④ TB15363 Introduction to Aerospace Engineering Mon.1, Thu.1 [M2-213 (Bld. A03) Aobayama East]									
Tue.	④ TB15074 Fluid Mechanics II Tue.1, Fri.1 [M2-213 (Bld. A03) Aobayama East] Kenichi Funamoto		④ TB15024 Control Engineering II Tue.2, Fri.2 [M2-214 (Bld. A03) Aobayama East] Kazuya Yoshida							
Wed.										
Thu.	④ TB15362 Manufacturing Engineering and Technology II Mon.1, Thu.1 [M2-215 (Bld. A03) Aobayama East] Masayoshi Mizutani, Takeshi Yamaguchi		④ TB15281 Electromagnetics I Mon.2, Thu.2 [M2-214 (Bld. A03) Aobayama East] Takashiro Tsukamoto, Gael Sebald							
	④ TB15363 Introduction to Aerospace Engineering Mon.1, Thu.1 [M2-213 (Bld. A03) Aobayama East]									

Fri.	㊤ TB15074	㊤ TB15024		㊤ TB15401
	Fluid Mechanics II	Control Engineering II		Design and Drawing I
	Tue.1, Fri.1	Tue.2, Fri.2		Fri.4-5
	[M2-213 (Bld. A03) Aobayama East]	[M2-214 (Bld. A03) Aobayama East]		[M2-214 and Design Room (Bld. A03) Aobayama East]
	Kenichi Funamoto	Kazuya Yoshida		Yusuke Tamura

Seminar II:  
5 semester-late, “Seminar II” will be offered at each course from 13:00, so follow the instructions of your laboratory instructor and take classes on any day of the week.  
IMAC-U TB16341  
•㊤Classes of semester subject   ㊤ Classes of quarter subject

Mechanical and Aerospace Engineering 3 Quarter (6 Semester)

6S 3Q	8:50 to 9:35 a.m.	9:35 to 10:20 a.m.	10:30 to 11:15 a.m.	11:15 to 12:00 p.m.	1:00 to 1:45 p.m.	1:45 to 2:30 p.m.	2:40 to 3:25 p.m.	3:25 to 4:10 p.m.	4:20 to 5:05 p.m.	5:05 to 5:50 p.m.
Mon.			ⓀTB16254  Machine Design I  Mon.2, Fri.2 [M2-213 (Bld. A03) Aobayama East] Hiraku Matsukuma		Ⓚ TB16114  Measurement and Instrumentation I  Mon.3, Thu.1 [M2-213 (Bld. A03) Aobayama East] Wei Gao		Ⓚ TB16261  Robotics I  Mon.4, Fri.1 [M2-213 (Bld. A03) Aobayama East] Yasuhisa Hirata	Registration is not required  Graduation Thesis  Laboratory Laboratory faculty members		
Tue			ⓈTB16341  Seminar II  [M2-214 (Bld. A03) Aobayama East]							
Wed					Ⓢ TB16133      Laboratory Experiment II(Finemechnics)      Ken Suzuki  ⓈTB16131      Laboratory Experiment II(Mechanical Systems)      Yuji Ichikawa					
Thu		Ⓚ TB16114  Measurement and Instrumentation I  Mon.3, Thu.1 [M2-213 (Bld. A03) Aobayama East] Wei Gao			Ⓢ TB16136      Laboratory Experiment II(Aerospace Engineering)      Masayuki Takahashi					
Fri		Ⓚ TB16261  Robotics I  Mon.4, Fri.1 [M2-213 (Bld. A03) Aobayama East] Yasuhisa Hirata	ⓀTB16254  Machine Design I  Mon.2, Fri.2 [M2-213 (Bld. A03) Aobayama East] Hiraku Matsukuma		Ⓢ TB16135      Laboratory Experiment (Robotics)      Shingo Kagami  Ⓢ TB16137      Laboratory Experiment (Mechanical/Biomedical Engineering)      Takeshi Okuyama					

- ⓈClasses of semester subject    Ⓚ Classes of quarter subject
- In 6 semesters, "Graduation Thesis" will be conducted in each laboratory (3 hours per week). Be sure to check with the laboratory.
- “Laboratory Experiment II” take courses for which you belong to the course.



Mechanical and Aerospace Engineering 4 Quarter (6 Semester)

6S 4Q	8:50 to 9:35 a.m.	9:35 to 10:20 a.m.	10:30 to 11:15 a.m.	11:15 to 12:00 p.m.	1:00 to 1:45 p.m.	1:45 to 2:30 p.m.	2:40 to 3:25 p.m.	3:25 to 4:10 p.m.	4:20 to 5:05 p.m.	5:05 to 5:50 p.m.
Mon.	④ TB16192  Robotics II  Mon.1, Thu.1 [M2-213 (Bld. A03) Aobayama East] Mitsuhiro Hayashibe		④ TB16052  Computational Mechanics  Mon.2, Thu.2 [M2-213 (Bld. A03) Aobayama East] Yoshiteru Aoyagi				④ TB16312  Measurement and Instrumentation II  Mon.4, Fri.2 [M2-213 (Bld. A03) Aobayama East] Gao Wei			
Tue										
Wed					⑤ TB16133      Laboratory Experiment II(Finemechnics)      Ken Suzuki  ⑤TB16131      Laboratory Experiment II(Mechanical Systems)      Yuji Ichikawa					
Thu	④ TB16192  Robotics II  Mon.1, Thu.1 [M2-213 (Bld. A03) Aobayama East] Mitsuhiro Hayashibe		④ TB16052  Computational Mechanics  Mon.2, Thu.2 [M2-213 (Bld. A03) Aobayama East] Yoshiteru Aoyagi		⑤ TB16136      Laboratory Experiment II(Aerospace Engineering)      Masayuki Takahashi					
Fri			④ TB16312  Measurement and Instrumentation II  Mon.4, Fri.2 [M2-213 (Bld. A03) Aobayama East] Gao Wei		⑤ TB16135      Laboratory Experiment (Robotics)      Shingo Kagami  ⑤ TB16137      Laboratory Experiment (Mechanical/Biomedical Engineering)      Takeshi Okuyama					

- ⑤Classes of semester subject    ④ Classes of quarter subject
- In 6 semesters, "Graduation Thesis" will be conducted in each laboratory (3 hours per week). Be sure to check with the laboratory.  
“Laboratory Experiment II”take courses for which you belong to the course.

Mechanical and Aerospace Engineering 1 Quarter (7 Semester)

7S 1Q	8:50 to 9:35 a.m.	9:35 to 10:20 a.m.	10:30 to 11:15 a.m.	11:15 to 12:00 p.m.	1:00 to 1:45 p.m.	1:45 to 2:30 p.m.	2:40 to 3:25 p.m.	3:25 to 4:10 p.m.	4:20 to 5:05 p.m.	5:05 to 5:50 p.m.
Mon.							◎ TB17391  Space Engineering  Mon.4-5 [M2-214 (Bld. A03) Aobayama East]  Kazuya Yoshida			
	◎ TB17292  Tribology  Mon.1, Thu.1 [M2-215 (Bld. A03) Aobayama East]  Takeshi Yamaguchi				◎ TB17421  Thermodynamics II  Mon.3, Wed.2  Mech.8  Matsuhiko Nishizawa, Shinichiro Nomura	◎ TB17411  Biomechanical Engineering  Mon.4, Wed.1  Mech.8  Yoichi Haga, Matsuhiko Nishizawa, Kenji Kikuchi, Kenichi Funamoto		Registration is not required  Graduation Thesis   Laboratory  Laboratory faculty members		
Tue.			◎ TB17441  Energy Conversion System Engineering  Tue.2, Fri.1 [M2-213 (Bld. A03) Aobayama East]  Makoto Shimizu		Register in the column "その他 (Other) "  TB17451      Laboratory Experiment I  TB17461      Production Process Practice  TB17471      Computer Seminar II  *Details will be given at the guidance.					
Wed	◎ TB17411  Biomechanical Engineering  Mon.4, Wed.1  Mech.8  Yoichi Haga, Matsuhiko Nishizawa, Kenji Kikuchi, Kenichi Funamoto		◎ TB17421  Thermodynamics II  Mon.3, Wed.2  Mech.8  Matsuhiko Nishizawa, Shinichiro Nomura		Register in the column "その他 (Other) "  TB17451      Laboratory Experiment I  TB17461      Production Process Practice  TB17471      Computer Seminar II  *Details will be given at the guidance.					
Thu	◎ TB17292  Tribology  Mon.1, Thu.1 [M2-215 (Bld. A03) Aobayama East]  Takeshi Yamaguchi				Register in the column "その他 (Other) "  TB17451      Laboratory Experiment I  TB17461      Production Process Practice  TB17471      Computer Seminar II  *Details will be given at the guidance.					
Fri	◎ TB17441  Energy Conversion System Engineering  Tue.2, Fri.1 [M2-213 (Bld. A03) Aobayama East]  Makoto Shimizu				◎TB17431  Design and drawing II  Fri.3-5 [M2-215 (Bld. A03) Aobayama East]  Chen Ying, Fedorynenko Dmytro					

Laboratory Experiment I, Production Process Practice and Computer Seminar II class day								
subclass	Tue.		Wed.		Thu.		Fri.	
	Apr,May	Jun,Jul	Apr,May	Jun,Jul	Apr,May	Jun,Jul	Apr,May	Jun,Jul
機械系I	break		Computer Seminar II	Production Process Practice	Laboratory Experiment I		break	
機械系II	break		Computer Seminar II	break	Laboratory Experiment I		break	Production Process Practice
機械系III	Laboratory Experiment I		Production Process Practice	Computer Seminar II	break		break	
機械系IV	Laboratory Experiment I		break	Computer Seminar II	break		Production Process Practice	break
機械系V	break		Laboratory Experiment I		Production Process Practice	Computer Seminar II	break	
機械系VI	break	Production Process Practice	Laboratory Experiment I		break	Computer Seminar II	break	

→IMAC-U  
students subclass

(About the classroom) Laboratory Experiment I(See the texts), Production Process Practice(See the texts), Computer Seminar II(M2-214 (Bld. A03) Aobayama East)

- ㊦Classes of semester subject ㊦ Classes of quarter subject
- In 7 semesters, "Graduation Thesis" will be conducted in each laboratory (6 hours per week).

Please apply at the Academic Affairs section of Deptment of Mechanical and Aerospace Engineering when registering for Combustion Engineering(燃焼工学)

Mechanical and Aerospace Engineering 2 Quarter (7 Semester)

7S 2Q	8:50 to 9:35 a.m.	9:35 to 10:20 a.m.	10:30 to 11:15 a.m.	11:15 to 12:00 p.m.	1:00 to 1:45 p.m.	1:45 to 2:30 p.m.	2:40 to 3:25 p.m.	3:25 to 4:10 p.m.	4:20 to 5:05 p.m.	5:05 to 5:50 p.m.
Mon.					◎ TB17381  Electrical and Electronic Circuit II  Mon.3, Wed.1 [M2-215 (Bld. A03) Aobayama East]  Tetsu Tanaka		Registration is not required  Graduation Thesis  Laboratory Laboratory faculty members			
Tue.			◎ TB17281  English Communications in Technology II  Tue.2, Fri.2  Mech.3  Hideyuki Takahashi, Atsushi Iizuka, Issei Suzuki, Masayoshi Adachi		Register in the column "その他 (Other) "  TB17451                      Laboratory Experiment I  TB17461                      Production Process Practice TB17471                      Computer Seminar II  *Details will be given at the guidance.					
			◎ TB17282  English Communications in Technology II  Tue.2, Fri.2  Mech.7  Chen Ying							
Wed.	◎ TB17371  Heat Transfer  Wed.1-2 [M2-213 (Bld. A03) Aobayama East]  Atsuki Komiya				Register in the column "その他 (Other) "  TB17451                      Laboratory Experiment I  TB17461                      Production Process Practice TB17471                      Computer Seminar II  *Details will be given at the guidance.					
	◎ TB17381  Electrical and Electronic Circuit II  Mon.3, Wed.1 [M2-215 (Bld. A03) Aobayama East]  Tetsu Tanaka									
Thu.					Register in the column "その他 (Other) "  TB17451                      Laboratory Experiment I  TB17461                      Production Process Practice TB17471                      Computer Seminar II  *Details will be given at the guidance.					

Fri.		◎ TB17281 English Communications in Technology II Tue.2, Fri.2 Mech.3 Hideyuki Takahashi, Atsushi Iizuka, Issei Suzuki, Masayoshi Adachi	㊦TB17431 Design and drawing II Fri.3-5 [M2-215 (Bld. A03) Aobayama East] Chen Ying, Fedorynenko Dmytro
		◎ TB17282 English Communications in Technology II Tue.2, Fri.2 Mech.7 Chen Ying	

Laboratory Experiment I, Production Process Practice and Computer Seminar II class day								
subclass	Tue.		Wed.		Thu.		Fri.	
	Apr,May	Jun,Jul	Apr,May	Jun,Jul	Apr,May	Jun,Jul	Apr,May	Jun,Jul
機械系I	break		Computer Seminar II	Production Process Practice	Laboratory Experiment I		break	
機械系II	break		Computer Seminar II	break	Laboratory Experiment I		break	Production Process Practice
機械系III	Laboratory Experiment I		Production Process Practice	Computer Seminar II	break		break	
機械系IV	Laboratory Experiment I		break	Computer Seminar II	break		Production Process Practice	break
機械系V	break		Laboratory Experiment I		Production Process Practice	Computer Seminar II	break	
機械系VI	break	Production Process Practice	Laboratory Experiment I		break	Computer Seminar II	break	

→IMAC-U students subclass

(About the classroom) Laboratory Experiment I (See the texts) , Production Process Practice (See the texts) , Computer Seminar II (M2-214 (Bld. A03) Aobayama East)

- ㊦Classes of semester subject ◎ Classes of quarter subject
- In 7 semesters, "Graduation Thesis" will be conducted in each laboratory (6 hours per week).

Please apply at the Academic Affairs section of Deptment of Mechanical and Aerospare Engineering when registring for Combustion Engineering (燃焼工学)

Mechanical and Aerospace Engineering 3 Quarter (8 Semester)

8S 3Q	8:50 to 9:35 a.m.	9:35 to 10:20 a.m.	10:30 to 11:15 a.m.	11:15 to 12:00 p.m.	1:00 to 1:45 p.m.	1:45 to 2:30 p.m.	2:40 to 3:25 p.m.	3:25 to 4:10 p.m.	4:20 to 5:05 p.m.	5:05 to 5:50 p.m.
Mon	④ TB18101  Aircraft design  Mon.1, Wed.2 [M2-213 (Bld. A03) Aobayama East]  Taku Nonomura		Registration is not required  Graduation Thesis   Laboratory  Laboratory faculty members							
Tue.	④ TB18091  Strength and Fracture of Materials  Tue.1, Thu.2 [M2-213 (Bld. A03) Aobayama East]  Kazuhiro Ogawa, Kazuhisa Sato		④ TB18061  Heat and Mass Transfer  Tue.2, Fri.1 Mech.5  Ken Suzuki		Registration is not required  Graduation Thesis   Laboratory  Laboratory faculty members					
	④ TB18071  Computational Fluid Dynamics  Tue.1, Fri.2 [M2-215 (Bld. A03) Aobayama East]  Takuji Ishikawa		④ TB18081  Compressible Fluid Dynamics  Tue.2, Thu.2 [M2-215 (Bld. A03) Aobayama East]  Soshi Kawai		Registration is not required  Graduation Thesis   Laboratory  Laboratory faculty members					
Wed.	Registration is not required  Graduation Thesis   Laboratory  Laboratory faculty members		④ TB18101  Aircraft design  Mon.1, Wed.2 [M2-213 (Bld. A03) Aobayama East]  Taku Nonomura		Registration is not required  Graduation Thesis   Laboratory  Laboratory faculty members					
Thu.	Registration is not required  Graduation Thesis   Laboratory  Laboratory faculty members		④ TB18081  Compressible Fluid Dynamics  Tue.2, Thu.2 [M2-215 (Bld. A03) Aobayama East]  Soshi Kawai		Registration is not required  Graduation Thesis   Laboratory  Laboratory faculty members					
	Registration is not required  Graduation Thesis   Laboratory  Laboratory faculty members		④ TB18091  Strength and Fracture of Materials  Tue.1, Thu.2 [M2-213 (Bld. A03) Aobayama East]  Kazuhiro Ogawa, Kazuhisa Sato		Registration is not required  Graduation Thesis   Laboratory  Laboratory faculty members					

Fri.	④ TB18061	④ TB18071	Registration is not required
	Heat and Mass Transfer	Computational Fluid Dynamics	
	Tue.2, Fri.1	Tue.1, Fri.2	
	Mech.5	[M2-215 (Bld. A03) Aobayama East]	
	Ken Suzuki	Takuji Ishikawa	
			Graduation Thesis
			Labolatory
			Laboratory faculty members

•⑤Classes of semester subject    ④ Classes of quarter subject

Mechanical and Aerospace Engineering 4 Quarter (8 Semester)

8S 4Q	8:50 to 9:35 a.m.	9:35 to 10:20 a.m.	10:30 to 11:15 a.m.	11:15 to 12:00 p.m.	1:00 to 1:45 p.m.	1:45 to 2:30 p.m.	2:40 to 3:25 p.m.	3:25 to 4:10 p.m.	4:20 to 5:05 p.m.	5:05 to 5:50 p.m.
Mon.	Registration is not required  Graduation Thesis   Labolatory Laboratory faculty members									
Tue	Registration is not required  Graduation Thesis  Labolatory Laboratory faculty members	Ⓢ TB18111  Machine Design II  Tue.2, Fri.1 [M2-213 (Bld. A03) Aobayama East] Takafumi Fukushima			Registration is not required  Graduation Thesis  Labolatory Laboratory faculty members					
Wed	Registration is not required  Graduation Thesis   Labolatory Laboratory faculty members									
Thu	Registration is not required  Graduation Thesis   Labolatory Laboratory faculty members									
Fri	Ⓢ TB18111  Machine Design II  Tue.2, Fri.1 [M2-213 (Bld. A03) Aobayama East] Takafumi Fukushima		Registration is not required  Graduation Thesis   Labolatory Laboratory faculty members							

• ⓈClasses of semester subject Ⓢ Classes of quarter subject



## Mechanical and Aerospace Engineering 1-2 Quarter (9 Semester)

9S	8:50 to 9:35 a.m.	9:35 to 10:20 a.m.	10:30 to 11:15 a.m.	11:15 to 12:00 p.m.	1:00 to 1:45 p.m.	1:45 to 2:30 p.m.	2:40 to 3:25 p.m.	3:25 to 4:10 p.m.	4:20 to 5:05 p.m.	5:05 to 5:50 p.m.
Mon.	<p>Registration is not required</p> <p>Graduation Thesis</p> <p>Labolatory</p> <p>Laboratory faculty members</p>									
Tue	<p>Registration is not required</p> <p>Graduation Thesis</p> <p>Labolatory</p> <p>Laboratory faculty members</p>									
Wed	<p>Registration is not required</p> <p>Graduation Thesis</p> <p>Labolatory</p> <p>Laboratory faculty members</p>									
Thu	<p>Registration is not required</p> <p>Graduation Thesis</p> <p>Labolatory</p> <p>Laboratory faculty members</p>									
Fri	<p>Registration is not required</p> <p>Graduation Thesis</p> <p>Labolatory</p> <p>Laboratory faculty members</p>									

# Web-based registration

## **Spring Semester (1•3•5•7 Semester)**

First day of Spring Semester  
Class Registration by website

April 10 (Mon.)

April 10 (Mon.) – April 21 (Fri.), 2023

Procedures for deregistering classes (1<sup>st</sup> Quarter)

April 24 (Mon.) – May 12 (Fri), 2023

Procedures for deregistering classes (2<sup>nd</sup> Quarter)

June 19 (Mon.) – June 30 (Fri.), 2023

## **Fall Semester (2•4•6•8 Semester)**

First day of Fall Semester  
Class Registration by website

October 2 (Mon.)

October 2 (Mon.) – October 13 (Fri.), 2023

Procedures for deregistering classes (3<sup>rd</sup> Quarter)

October 16 (Mon.) – October 31 (Tue.), 2023

Procedures for deregistering classes (4<sup>th</sup> Quarter)

December 11 (Mon.) – December 22 (Fri.), 2023

After the registration, confirmation/ revision period, it is unable to change registration.

If the course is not taken without requesting a cancellation, the student will receive a failing "D" grade.